



High⁵

For information and applications
Please contact us at:

scuola@buzziunicem.it

High 5

Business teams
with school

School-to-work programs are the outcome of meetings and exchanges of information between the educators, school administrators and the companies involved. If well structured, this pathway can be a truly useful tool for young people to plan their futures and prepare themselves for entering the work environment.

Buzzi Unicem sees this as an opportunity to support the future professional development of the students involved, by setting up a series of training programs aimed at enriching the cultural and personal background of each student along the lines of the principle of “learning by doing”.

The contact person at the school receives all the information needed to evaluate the type of pathway to be followed by the student, before reaching an agreement with the company on the content and format of the project.

Each project is monitored by the company tutor assigned to the student.

The tutor is responsible for integrating the young student into the company, helping him/her with all the activities assigned, monitoring the progress of the training program, and verifying that the goals have been achieved.

Buzzi Unicem is convinced that collaborating closely with schools is an excellent way to overcome the traditional separation between the school and work environments, and that by bringing them together through a system of shared programs it will eventually reduce the time taken by the next generations to transition into the working world.

High 5

Stimulate, Explore, Leave your mark

Planning



1 Communicate

with the school to determine needs and select the most suitable students for the type of work proposed



2 Identify

the company's departments responsible for monitoring the students



Establish

the company tutors



Create and sign

the Agreement and Individual Training Program that will support the student's pathway

What happens in the company

1



Create

the “Experience Program”.
Developed by the company tutor, this tool is used to plan the daily activities performed by the student while he/she is with the company, including travel if necessary (if required by the activity).



2 Onboard

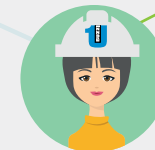
the student within the company



3

Provide training on

Safety and Privacy



4

Provide
PPE (personal protective equipment)
based on the job performed

5

Set up a
PC workstation
dedicated



Achievement of results



1

Award the Certificate



2

Compile the final documents

which summarize the pathway, together with the details of the process undertaken



Final

Report